



## 4/8 CH DVR with HDD Caddy

Vehicle Recording System



**VVH-MD40D (4ch)**  
**VVH-MD80D (8ch)**

Vehicle Surveillance

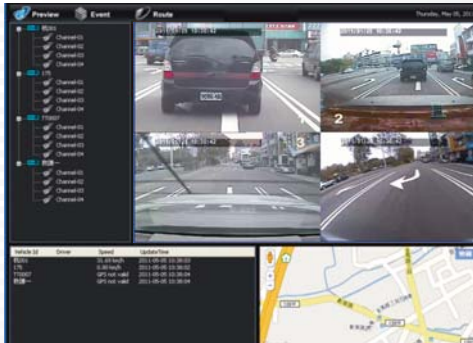


- Provide Video output for playing-back mode in mainframe.
- Recording format: D1 and CIF
- User friendly player software, easy to operation.
- Overall quick search event log.
- The full recording time and date can be showing in the monitor directly.
- Auto recording after power supplied.
- Removable HDD Track compatible with 2.5" HDD or SSD.
- Firmware can be upgraded via USB port.
- Support recording audio, video, G-sensor and GPS data at the same time.
- Optional 3G module, for real time monitoring the driving statue, or talk to driver.

# VVH-MD40D / VVH-MD80D

## 4/8CH DVR with HDD Caddy Vehicle Recording System

### Fleet Management



### SPECIFICATIONS

Model	VVH-MD40D (4ch)	VVH-MD80D (8ch)
Video Format	NTSC / PAL	
Operating System	Embedded Linux	
Video Input	4CH Input	8CH Input
Max. Cam Power supplier	12V/250mA/Each	
Video Output	1CH Output	
Audio Input	1CH Input	
Audio Output	1CH Output	
Alarm Input	4 Alarm Input	
Control Mode	GUI	
Multi-Language	English / Chinese / Others	
Display Resolution	NTSC: 120 frames/s (4x30 frames/s) PAL: 100 frames/s (4x25 frames/s)	NTSC: 240 frames/s (8x30 frames/s) PAL: 200 frames/s (8x25 frames/s)
Recording Resolution	NTSC: Max. 30fps@CIF / 15fps@D1 PAL: Max. 25fps@CIF / 15fps@D1	
Recording Frame	NTSC: Max. 30fps@CIF / 15fps@D1 PAL: Max. 25fps@CIF / 15fps@D1	
Display Mode	Full Screen, 4 Split	Full Screen, 4 / 9 Split
Display Resolution	NTSC: 720 x 480 PAL: 720 x 576	
Recording Resolution	NTSC: 360 x 240@CIF / 720 x 480@D1 PAL : 360 x 288@CIF / 720 x 576@D1	
Compression Algorithm	H.264	
HDD	2.5"SATA HDD Caddy Max. 1Tb	
Backup Device	USB Storage or through Carbox Player	
Playback Mode	Search Function: Time / Event Full Screen	
LED Indicator	4 LED (LAN · REC · GPS · Power)	
Signal Loss Detector	Yes	
Buzzer Alarm Output	Yes	
RS485	Yes	
GPS	Optional	
G-SENSOR	Yes	
3G module	Optional	
WIFI	Optional	
IR Remote Control	Yes	
Watchdog	Yes	
Extended Record Mode	Yes	
Power Supply	DC 8V~36V	
Dimension	250mm x 174.8mm x 69.5mm	
Operation Temperature	-20°C ~ +65°C	
Weight	1.85kg(with bracket and HDD)	

★Version updating is not going to inform, please check the on-going updating information

### Vehicle Tracking Management System

#### 3G operating management system



#### Application Guide

